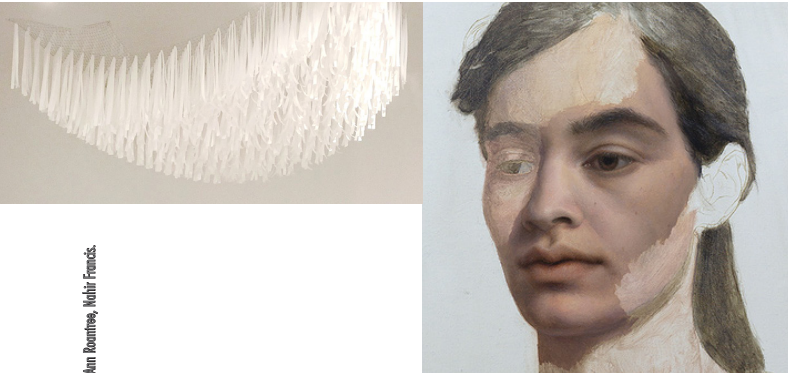


call for artists



Images: FRIEDA space 2016-2018. Cristina Egenitzky, Anthony Ranelli, Lisa Collection, Ann Roanline, Nohri Francis.



art exhibition across from the independence national historical park

FRIEDA is proud to introduce curated art exhibitions throughout the year in our Philadelphia space to celebrate art that spans generations. Opportunities are available for established or emerging artists who live or work within the Mid-Atlantic region (PA, NJ, NY, MD, DE and Washington, D.C.).

FRIEDA asks that selected artists schedule time to engage with our community through a workshop, demonstration or discussion during the exhibition period. No commission is expected from the sale of any art work; any transactions be handled directly by the artist and the potential buyer.

submission

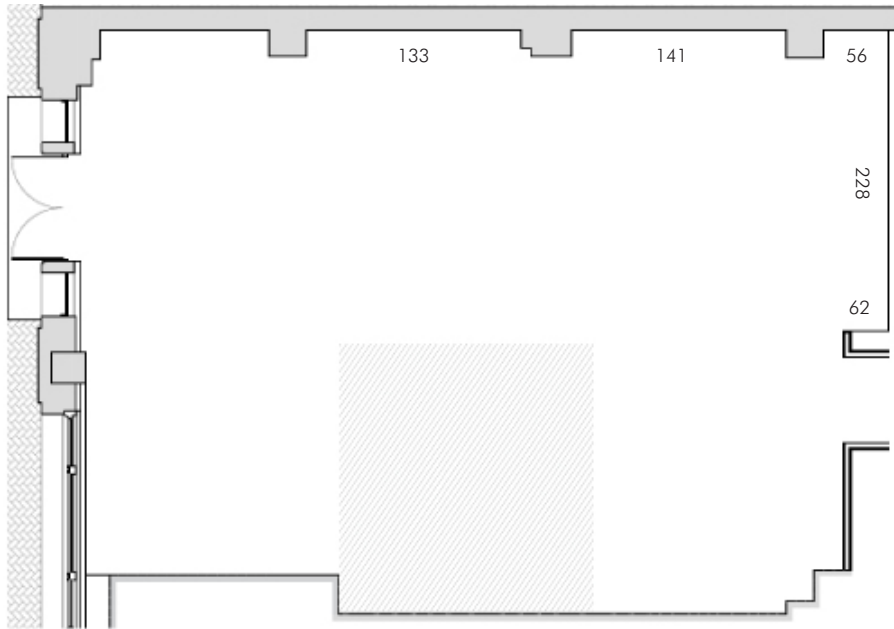
- Send email to hello@friedaforgenerations.com with subject line exhibition + corresponding month.
- Attach six (6) numbered JPEG images of work with no more than three (3) detail shots.
- Title each JPEG with your last name, first initial and an assigned number.
- Include image list with corresponding numbers with your JPEGS. Include title, size, medium and year.
- Include resume with mailing address, email address and phone number and artist's statement.
- \$25 application fee. You will be contacted by FRIEDA for payment on the phone with credit card.

additional information

- FRIEDA reserves the right to refuse any artwork for any reason.
- Artwork cannot be removed prior to the exhibition closing date.
- Artworks may be reproduced in publications and communications for publicity purposes related to the exhibition and general promotion. Artwork is subject to photography by visitors. Questions, please contact hello@friedaforgenerations.com



call for artists



group show

VOICES

september 27 - november 17

Open call for 2 and 3 dimensional artwork (Photo, print, painting, sculpture, ...) related to the theme VOICES.

Voices: the sound produced in a person's larynx and uttered through the mouth, as speech or song - I hear voices - scream - Maria Callas - whispering - MLK - expressing an attitude - demonstration - being vocal - shouting . . .

CALENDAR:

- Submission deadline: July 15, 2019
- Artists Notification: July 25, 2019
- Artwork must be ready to hang and delivered to FRIEDA on Monday, September 23, 2019
- Opening reception: Friday, September 27, 2019
- Dates for community supper and workshop tbd
- Exhibition ends: Sunday, November 17, 2019
- Deinstallation: Sunday, November 17, 2019

submission

name

address

phone

e-mail

name of submission

submission via email:
hello@friedaforgenerations.com

please include

- This submission form signed
 - Resume with artist's statement
 - Attach six (6) numbered JPEG images of work with no more than three (3) detail shots (*Title each JPEG with your last name, first initial and the corresponding assigned number*)
 - \$25 application fee
- You will be contacted by FRIEDA for payment over the phone with credit card.

	title	medium	size	year	retail value
1	_____	_____	_____	_____	_____
2	_____	_____	_____	_____	_____
3	_____	_____	_____	_____	_____
4	_____	_____	_____	_____	_____
5	_____	_____	_____	_____	_____
6	_____	_____	_____	_____	_____
	_____	_____	_____	_____	_____

signature, date

exhibition guidelines

about FRIEDA

FRIEDA for generations is a modern space that promotes culture, art and design with the goal of bringing together people of all ages and from diverse backgrounds.

After featuring a number of accomplished artists across various media, FRIEDA is proud to introduce curated art exhibitions scheduled throughout the year.

Our space is located in Center City Philadelphia next to the Independence National Historical Park, with exposure to the public seven days a week.

Please visit at www.friedaforgenerations.com

general exhibition information

Opportunities are available for established or emerging artists who live or work within the Mid-Atlantic region (PA, NJ, NY, MD, DE and Washington, D.C.).

Artwork will be exhibited at our space and will include an Opening Reception, Meet-the-Artist events and one additional encounter with the public, i.e. workshop or demonstration during the exhibition period.

FRIEDA is a multi-purpose space with curated exhibitions that encourages interaction between artists and the public. As such, **no commission is expected from the sale of any artwork.**

logistics and planning

- Exhibitions may take the form of a juried group or solo show or an invitational exhibition. Call-for-Artists with an entry fee will be posted on various call for artists websites and on FRIEDA website and Facebook page.
- Should FRIEDA decide not to hold the exhibition for any reason, all paid entry fees will be returned.
- Length of actual exhibitions will be from 6 to 8 weeks.
- Insurance (exhibition covered under general liability insurance up to \$1 million; no insurance for the artwork during transportation).

artist's responsibilities

- Transportation costs and delivery of artwork on assigned day.
- Price list of artwork communicated in writing at the time of submission. Prices cannot be changed prior or during show. FRIEDA should be allowed a discount of 40% off the show price. FRIEDA cannot buy artwork for a third party.
- Digital biographical or marketing materials.
- Handle any sales transactions directly with potential buyer, including wrapping and delivery of artwork. Artwork cannot be taken down before end of show.
- Install artwork on agreed date and remove artwork immediately upon closing of exhibition, as there is no storage space available.
- Attendance at the "Meet-the-Artist" Opening cocktail and at the FRIEDA community supper with a short introduction of work.
- Lead one workshop or demonstration during exhibition time frame. Format, content, date and time to be agreed upon. All proceeds from these artist-led events benefit FRIEDA community.

FRIEDA commitment

- 1) Promote the exhibition and related events.
- 2) Help artist install and take down artwork.
- 3) Provide Insurance for artwork at FRIEDA covered as part of FRIEDA general liability insurance of up to \$1 million. Insurance for artwork during transit, not provided by FRIEDA.
- 4) Invitation to and costs covered for any meet the artist events, including attendance to a community supper and the opening of the exhibition.
- 5) Cover material costs for workshop.

artist financial aid

Any artist living 60 miles or more from Philadelphia may apply for financial assistance (please ask for Financial Aid Request form) to cover costs related to artist participation in exhibition. To be clear, no financial aid is available to artist living less than 60 miles from Philadelphia, unless otherwise agreed.

If selected, FRIEDA will cover 100% of the transportation and lodging costs for the artist to bring the artwork to FRIEDA and to attend the "Meet the Artist" events, including the Opening Cocktail, the community supper and the workshop. Please note that all costs to take down the art work at the end of the show will be at the expense of the artist, this includes transportation and lodging costs.